

The Chardonmay

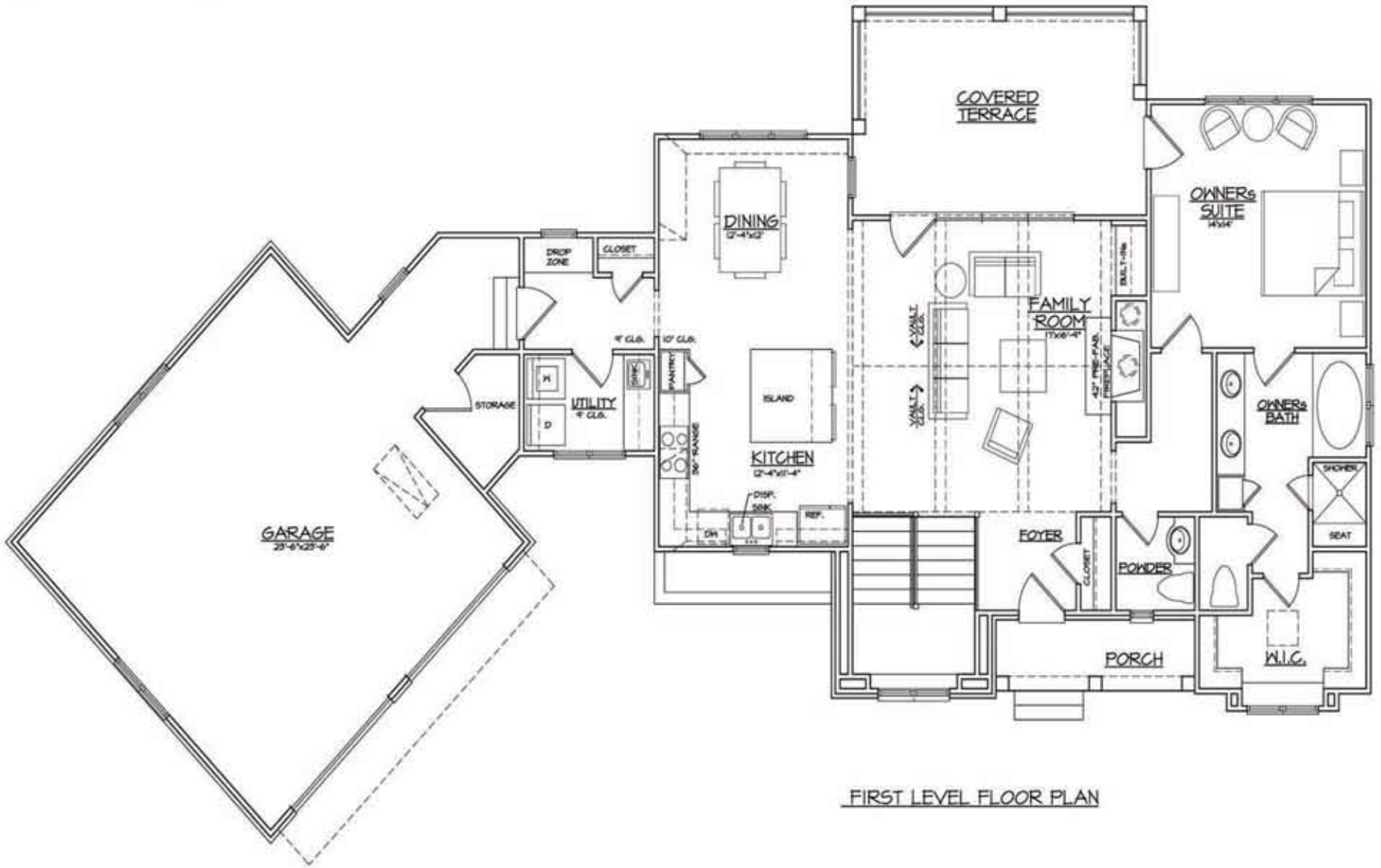


Front Elevation

The Chardonmay



Back Elevation



Chardonmay

SQUARE FOOTAGE:	
(FRAME ONLY)	
LOWER LEVEL	= 1073 SQ. FT.
FIRST LEVEL	= 1390 SQ. FT.
TOTAL HEATED	= 2463 SQ. FT.
TWO CAR GARAGE	= 642 SQ. FT.
PORCH	= 57 SQ. FT.
COVERED TERRACE	= 231 SQ. FT.
COVERED LANAI	= 231 SQ. FT.
STORAGE	= 94 SQ. FT.
MECHANICAL	= 66 SQ. FT.
TOTAL UNDER ROOF	= 3834 SQ. FT.
STAIRS COUNTED ONCE	

